

Confidential

JAPAN ENGINE CORPORATION

SERVICE ENGINEERING DEPARTMENT, SERVICE ENGINEERING SECTION
1, MINAMIFUTAMI, FUTAMI-CHO, AKASHI-CITY 674-0093, JAPAN

TEL. +81-78-949-0804 (direct), e-mail: sales2@j-eng.co.jp (parts & engineer order), service@j-eng.co.jp (technical inquiry)

(1/2)


Subject : Precaution of assembling piston rod stuffing box rings	Application	UEC Diesel Engine
	Type	All UEC
	No.	USI-13302E Rev.1
If necessary		

We are sometimes reported that stuffing box drain was increased after replacement of stuffing box rings.

We consider that it is one of the considerable reasons that stuffing box ring was assembled upside down. So, please check the direction of stuffing box rings at your maintenance time.

One stage of Stuffing box ring is a set of upper ring and lower ring.
Upper ring has set pin hole, Lower ring has set pin.

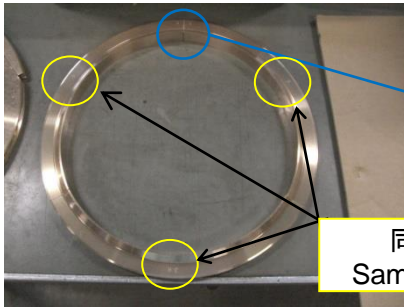
And also, please check the stamp marks of stuffing box rings at the same time.

CAUTION	
	<p>Stamping mark does not indicate ring direction of top or bottom. Upper ring and power ring can be identified by pin hole or pin, respectively.</p>

The response level shown in the upper right is Japan Engine Corporation's guidance and does not determine the response of users.
Further, it is not guaranteed the every action carried out according to this service information.
The service information issued by Japan Engine Corporation included not only copyright but also all rights is reverted on Japan Engine Corporation.

Plan record	Newly issued. 15th Nov. 2019(T.Y, T.N, D.Y) No.0300 (31st Jan. 2014) Rev.1 17 th Dec. 2020	Approved	<i>K. Yoshida</i>	SERVICE ENGINEERING DEPARTMENT
		Checked	<i>H. Hirabayashi</i>	SERVICE ENGINEERING SECTION
		Designed	<i>D. Yasuda</i>	DATE OF REVISED : 17 th Dec. 2020

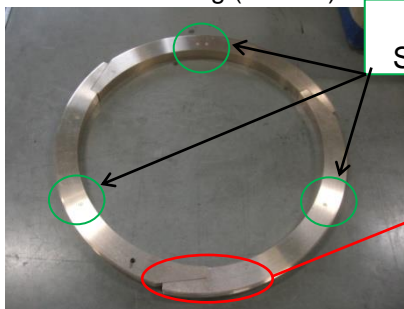
リング(上/穴付)
Upper Ring (Pin Hole)



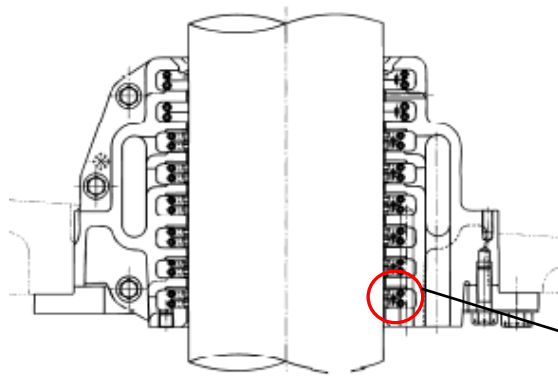
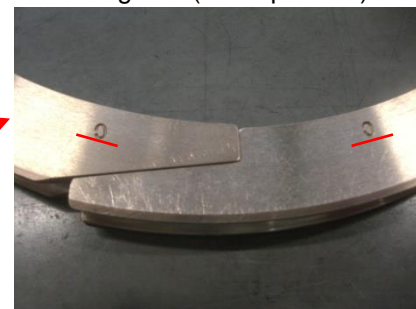
端部 (刻印)
Ring end (Stamp mark)



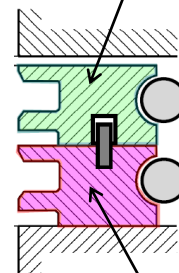
リング(下/ピン付)
Lower Ring (Set Pin)



端部 (刻印)
Ring end (Stamp mark)

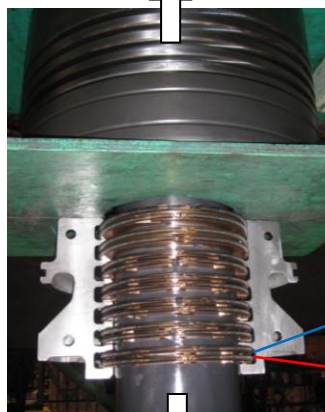


リング(上)穴付
Upper Ring / Pin Hole



リング(下)ピン付
Lower Ring / Set Pin

上方 / Top side



下方 / Bottom side

